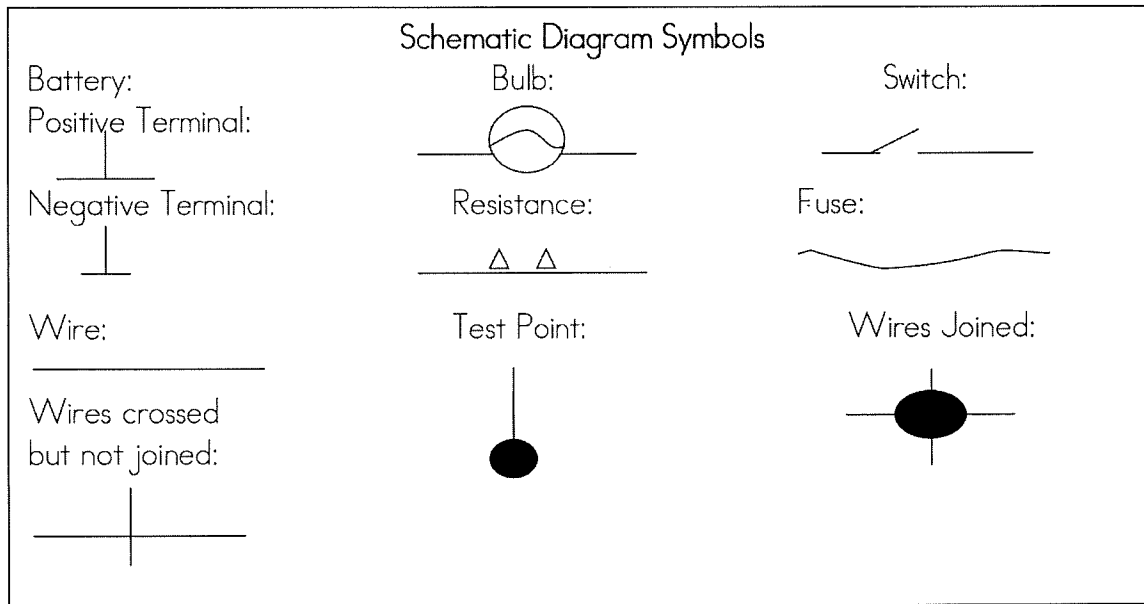
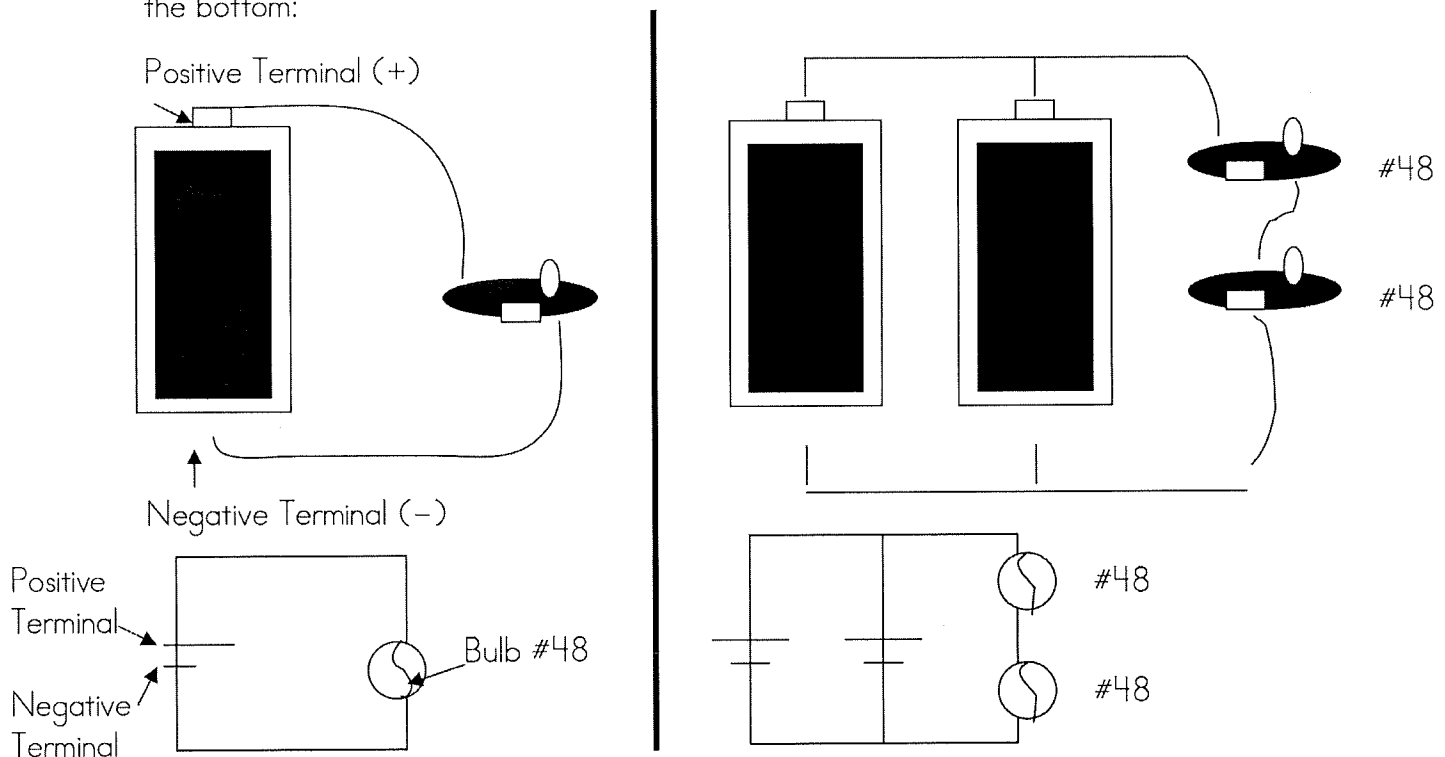


SCHEMATIC DIAGRAMS

In the box below are the symbols that are widely known and used in drawing schematic diagrams of electrical circuits:

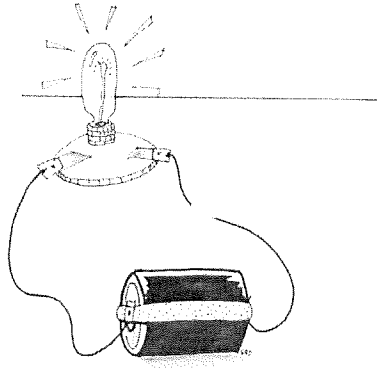


The circuits pictured on the top are represented by the corresponding schematic diagrams on the bottom:

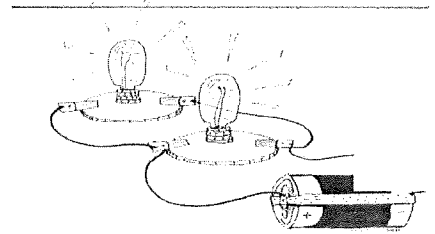


Pictured below are six complete electrical circuits. On another sheet of paper, draw the schematic diagram for each circuit.

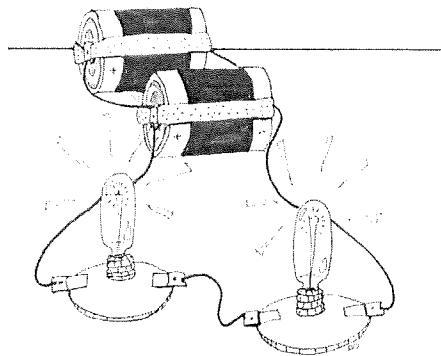
1.



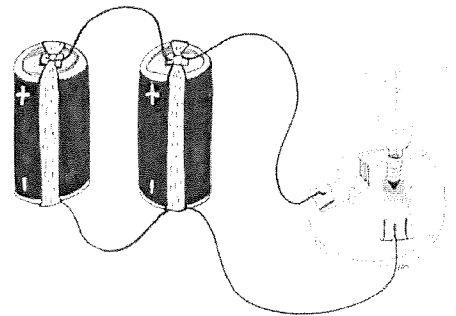
2.



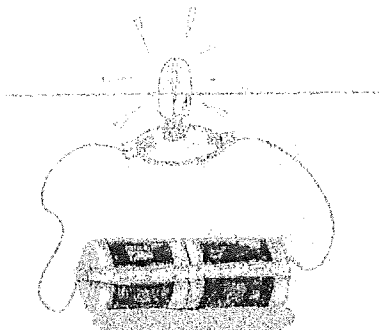
3.



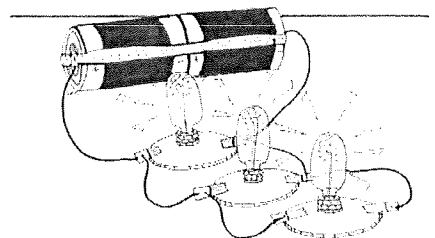
4.



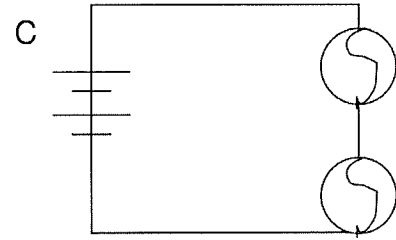
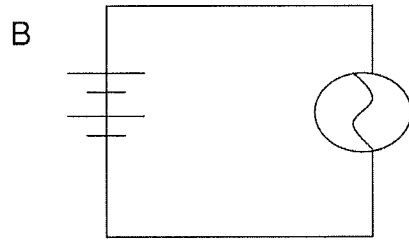
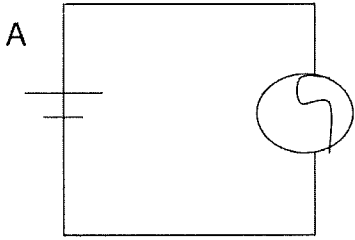
5.



6.



7. Read the schematic diagrams below. Construct the circuits shown below using batteries, bulbs, battery holders and bulb holders.



Remember to now use schematic diagrams whenever you draw a circuit in this activity book.

8. Will the bulb light if you construct the circuit below? Why or why not?

